

# DOMUS NOVA

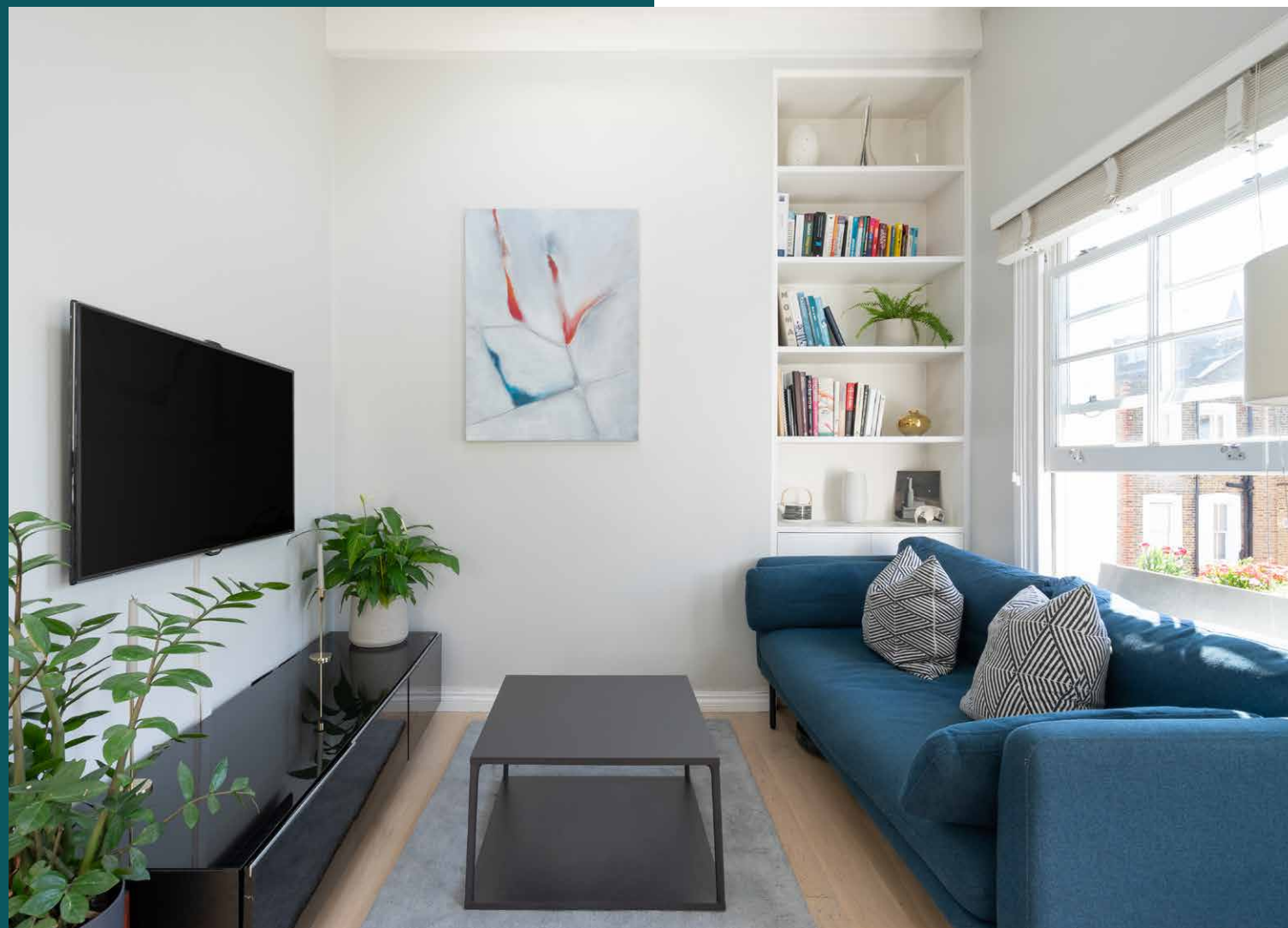


Lonsdale Road W11  
£899,000

Well-connected Lonsdale Road is a smart string of pastel-hued terraces – and this two-bedroom apartment enjoys prime position in one of its few triple-fronted properties.

A butterfly-vaulted ceiling adds panache to the generous, semi-open plan reception room. Its top-floor, south-facing vantage point keeps things bright, as do the skylights and three sash windows that run across the front of the home. Note the pretty window boxes, too.

Space is thoughtfully zoned: a streamlined contemporary kitchen with integrated appliances and plenty of cupboards; a bright dining area through a frameless doorway; and a cosy corner for lounging at the end of a long day. Pick up a book from bespoke shelving built into the alcove.







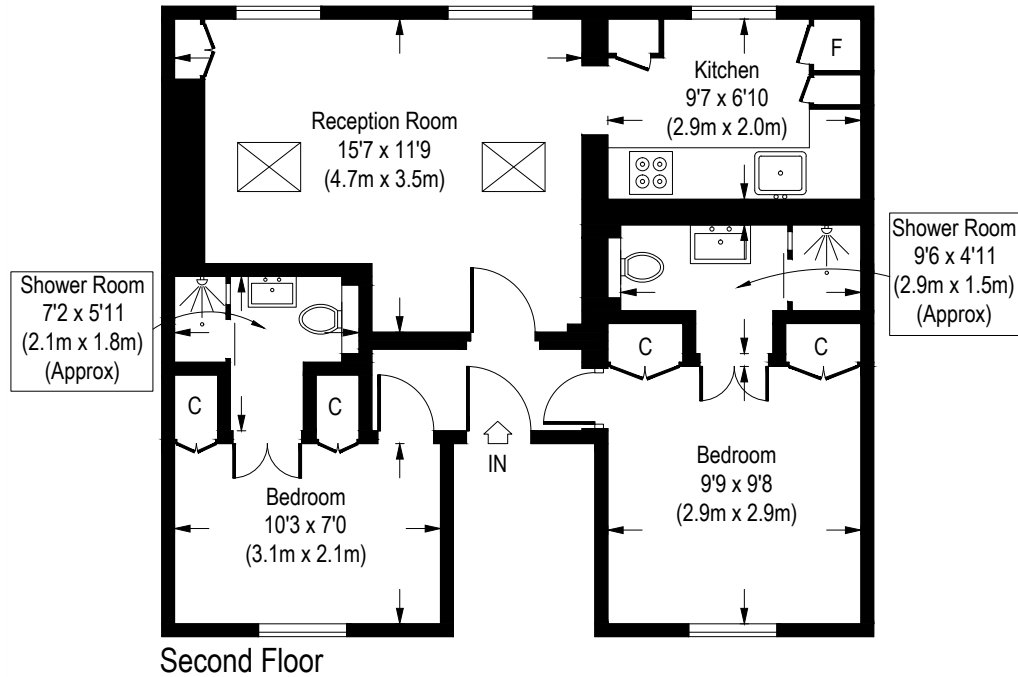




The two bedrooms are equally sized and immaculately finished. No second choice. No quibbles over who gets the best room. In both, access to the en suite is cleverly concealed between mirrored wardrobe doors.

Step through to clean-lined, modern bathrooms with walk-in cabin showers. A modest home that's big on class.





## Property Details

Generous, skylit reception room  
Integrated modern kitchen  
Two bedrooms with en suite bathrooms  
Royal Borough of Kensington & Chelsea  
Approx. 560sq ft / 52sq m EPC=C

Approximate Gross Internal Area = 560 Sq.Ft. / 52.0 Sq.M.

Floor Plans are for illustrative purposes only and not to scale.  
Compliant with RICS code of measuring practice.







Design-led homes in London's  
most sought-after locations.

Let's talk

020 7221 7817

[sales@domusnova.com](mailto:sales@domusnova.com)

[domusnova.com](http://domusnova.com)