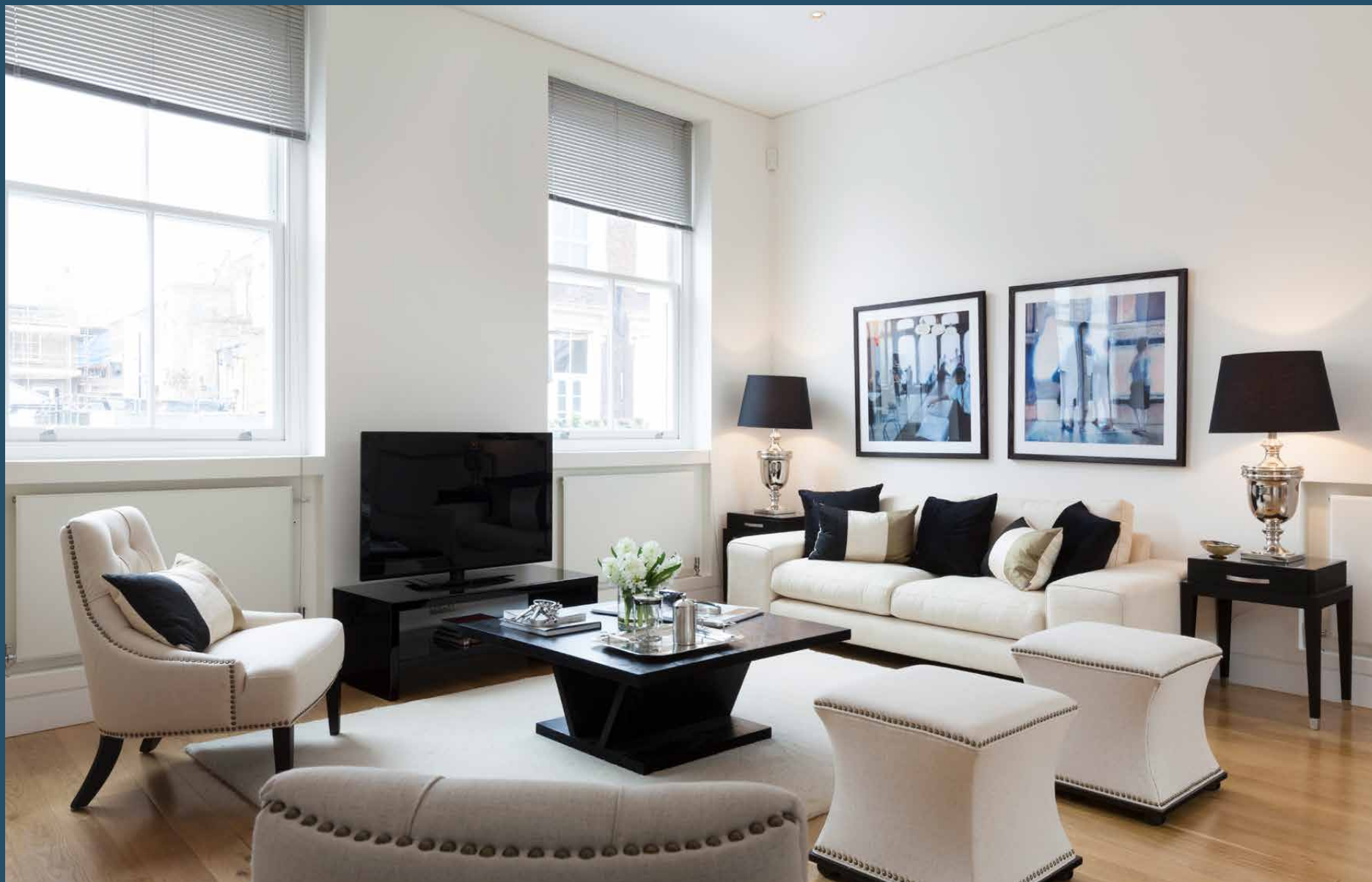


DOMUS NOVA



Dunworth Mews W11
£1,550,000

Just off Portobello Road, the cobbled cul-de-sac of Dunworth Mews sets the tone for this two-bedroom maisonette. A quintessential Notting Hill mews home, it's architecture echoes its coach house heritage; two storeys framed by high ceilings and sash windows. Inside? Timeless style and new build-quality finishes. Plus, chimney top views from the decked roof terrace. On the ground floor, a spacious L-shaped reception room that leads to an eat-in kitchen. Lofty proportions, dual-aspect glazing and an open-plan layout mean there's an uninterrupted flow of light and space here.

Gently descending levels subtly carve zones; come together for sundowners with friends in the west-facing reception room after logging off in the study area. Note the soaring ceiling and the quality of light channelled through the expansive window – a lovely place to work from home. Step down into the kitchen and dining room. It's all polished counters, considerably placed skylights and ample storage.



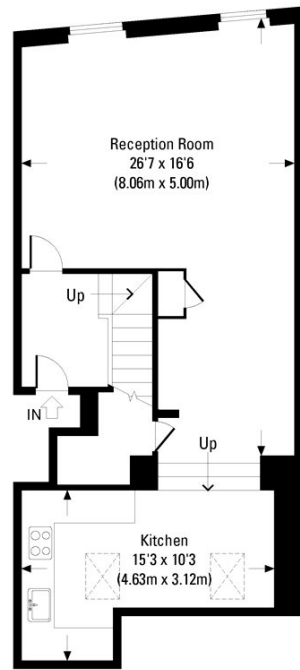




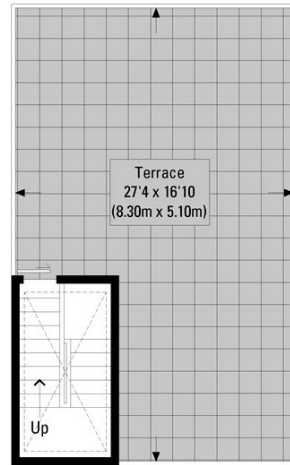
The upper floor is divided between two en-suite bedrooms, one with a curved tub, the other with a shower. Neutral tones and a serene atmosphere create a restful space to retreat to after soaking up the sun on the private roof terrace.



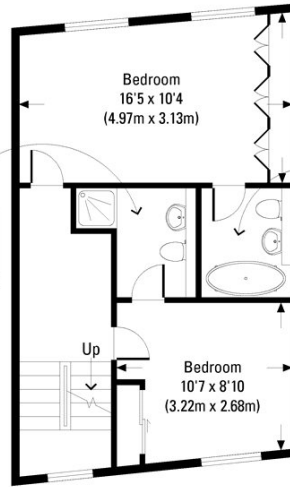




First Floor



Third Floor



Second Floor

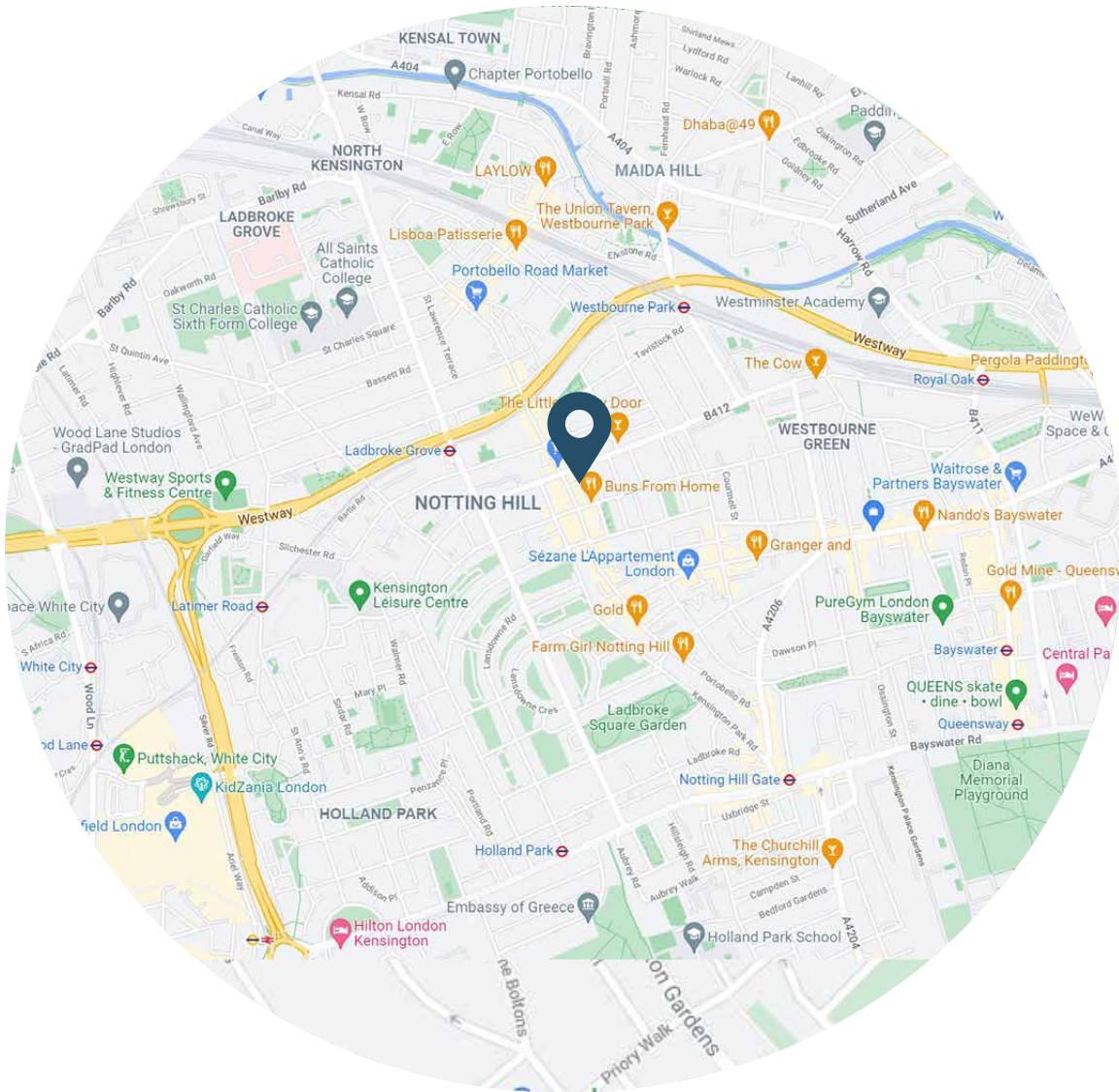
Approx. Gross Internal Floor Area 1049 Sq. Ft. / 97.43 Sq. M.

Floor plans are for illustrative purposes only and not to scale.

Compliant with RICS code of measuring practice.

Property Details

- Bright and airy
- Spacious living area
- Modern kitchen and dining area
- En-suite bedrooms
- Study area
- Decked roof terrace
- Expansive windows
- Next to Portobello Road
- Royal Borough of Kensington and Chelsea
- Approx. 1049 sq ft / 97.43 sq m EPC=D



Location

Dunworth Mews is a stepping stone to Notting Hill's most bohemian thoroughfares. Rummage through vintage treasures at Portobello Road around the corner. Flick through vinyl records at Rough Trade. While away rainy days at the Electric cinema or pick up a pageturner at the Notting Hill Bookshop. Share plates at Haya.

For Michelin star meals, Core by Clare Smyth is less than a ten-minute walk away. Evening tipples at Gold and back home in 5. For lazy Sundays, pick up some tangy sourdough at Fabrique further up the road.

Specialising in London
and Ibiza's design-led homes

Let's talk

020 7221 7817

sales@domusnova.com

domusnova.com