

DOMUS NOVA



Bassett Road W10
£1,200,000

On the cusp of Ladbroke Grove, this two-bedroom apartment is a steppingstone to Notting Hill at its most Bohemian. The buzz around the stalls of Portobello Market is close by but its tree-lined streets are exceptionally calm.

Step past its patina brickwork and uniform cast-iron railings and you'll find a home that toes the line between soothing and uplifting. Unfurling across parquet floors, the laid-back, open-plan kitchen and reception room, is at once modern and sympathetic.

Bay windows that illuminate, grand proportions and ornate cornicing echo this property's architectural heritage. Low-slung chandeliers, marble countertops and a streamlined, ergonomic kitchen keep the appeal timeless. And open shelving for those personal touches. Note the marble fireplace.

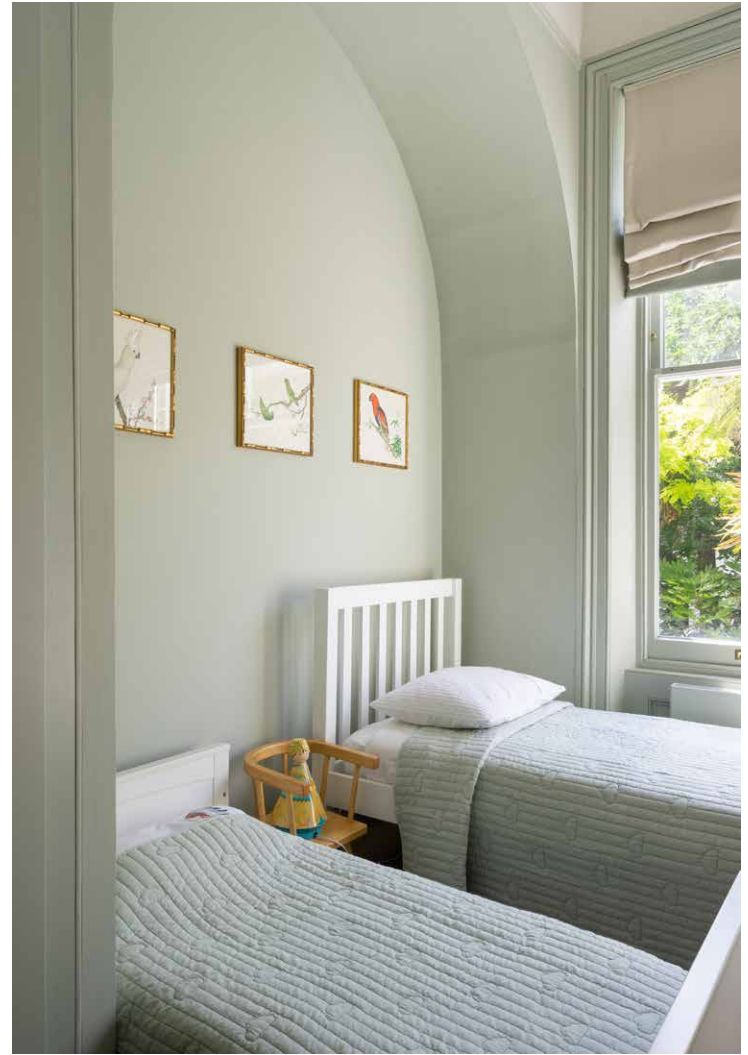


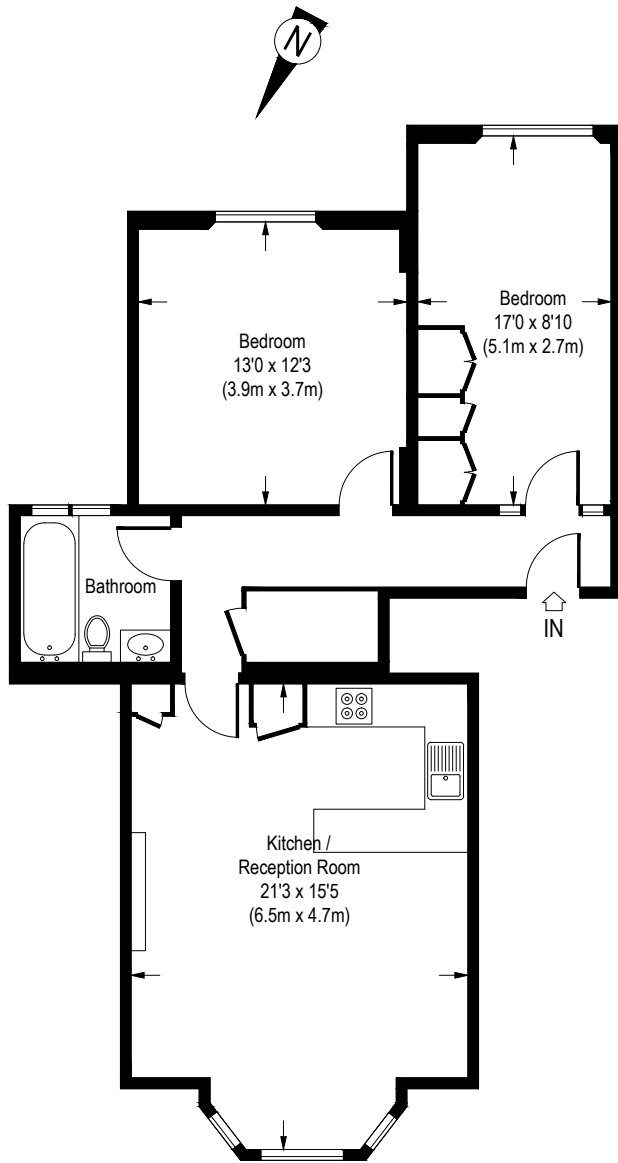






There's space to unplug in the south-facing bedrooms. In the master, a palette of natural and earthy textures quietly grounds. Sash windows overlook a curtain of leafy shrubs – peace and privacy. Rare perks in city life. The second bedroom capitalises on space with integrated storage and a curved alcove. Natural light reaches every corner of this bedroom thanks to the generous window. Both are served by a sophisticated family bathroom.





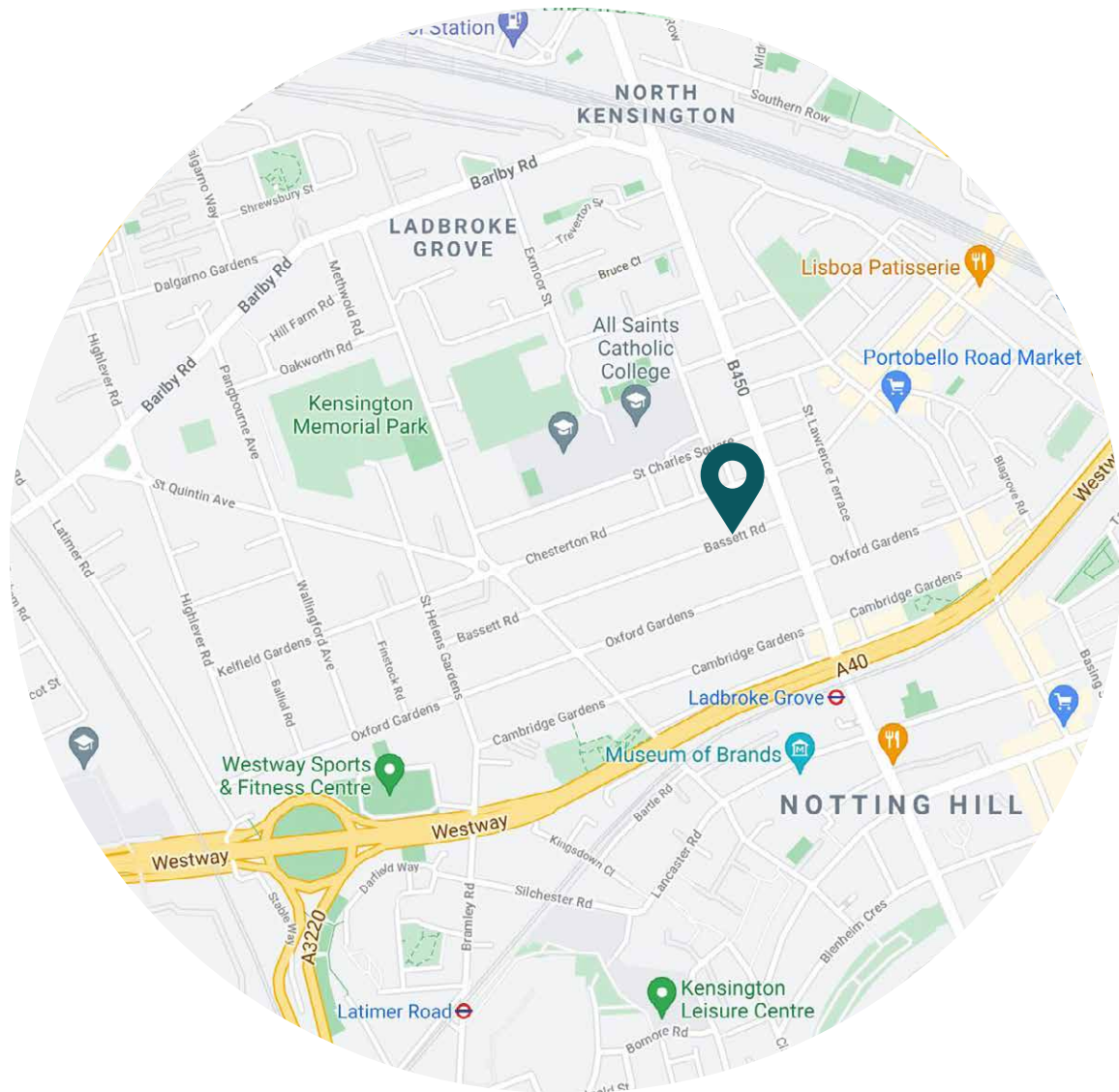
Raised Ground Floor

Approximate Gross Internal Area = 775 Sq.Ft. / 72.0 Sq.M.

Floor Plans are for illustrative purposes only and not to scale.
Compliant with RICS code of measuring practice.

Property Details

- Open-plan kitchen and reception room
- Two bedrooms
- One bathroom
- Marble fireplace
- Bay window
- Tree-lined street
- Royal Borough of Kensington & Chelsea
- Approx. 775 sq ft / 72 sq m. EPC=D



Location

On the cusp of Ladbroke Grove, exclusive Basset Road is a gathering spot for famous politicians and media types, but there's a village-like feel to its North Kensington location. Grand double-fronted Victorian villas and a brilliant sense of community, too. Spend early mornings browsing vintage collections on Portobello Road, midday strolls along the Grand Union Canal or picnics at Wormwood Scrubs. Reach the boutiques and restaurants of Westbourne Grove in 15.

Design-led homes in London's
most sought-after locations.

Let's talk

020 7221 7817

sales@domusnova.com

domusnova.com