

DOMUS NOVA



St Pancras Chambers
£3,950 p/w

A relic of Victorian architecture that began life in 1873, the landmark Grade I-listed St. Pancras Chambers sits at the gateway to the Continent. A contemporary three-bedroom penthouse, updated with modern luxuries by Thomas Griem of TG Studios. Beyond the building's marble columns, a lift in the stately entrance hall takes you to the fifth-floor apartment. 5,000 sq. ft of light, space and style deliver exceptional entertaining and living spaces set over three spacious levels.







A spectacle of cross-hatched Victorian beams set against triple-height rose windows and 44ft high ceilings impress in seconds..The almost ethereal light, channelled through the Cathedral-style floor-to-ceiling windows are best enjoyed from the ground-floor reception room. Think martinis and snooker at golden hour.

Descend the cantilevered staircase to the open-plan kitchen and reception room, thoughtfully zoned for cooking, dining and lounging.



Tucked under the staircase, a sumptuous, velvet-lined book nook. A great spot for a page-turner before bed. Past the cusped arches, two spacious bedrooms – and dressing rooms too – make the most of the period blueprint. High ceilings truly soar in the Arabescato marble en-suites, housed within the two Victorian towers. Waking up is easy when showering with panoramas of London’s skyline, from Canary Wharf in the east to the BT Tower in the west.

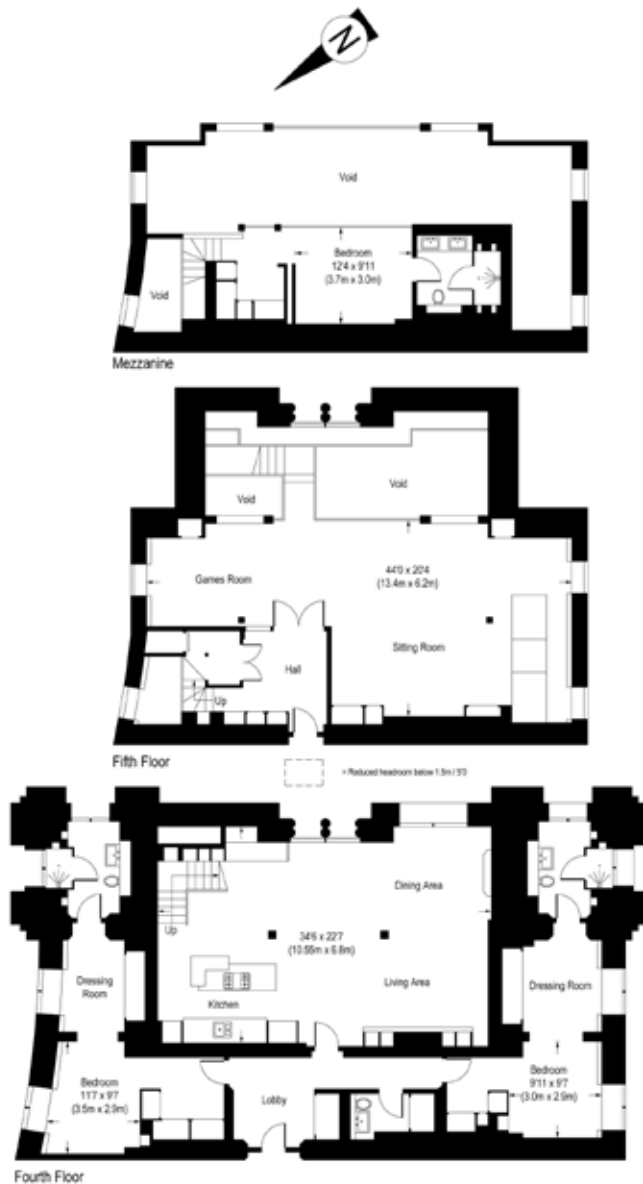












Approximate Gross Internal Area (Excluding Reduced Headroom)
 3077 Sq.Ft. / 285.9 Sq.M.
 Reduced Headroom = 34 Sq.Ft. / 3.2 Sq.M.
 Approximate Gross Internal Area (Including Reduced Headroom)
 3111 Sq.Ft. / 289.1 Sq.M.

Floor Plans are for illustrative purposes only and not to scale.
 Compliant with RICS code of measuring practice.

Property Details

Penthouse in an iconic Grade I-listed building
 Flawlessly and sympathetically updated for modern lifestyles
 Triple-height ceilings and original Victorian beams
 3 bedrooms with dressing rooms
 Large master suite occupies the mezzanine
 Spacious open-plan kitchen, dining and reception room
 Next to Kings Cross St Pancras station
 Borough of Camden
 Approx. 285.9 sq ft / 3077 sq m.





Location

St Pancras Chambers is a stone's throw from the string of stylish boutiques, eateries and bars of Coal Drops Yard. Sample mouth-watering continental dishes on alfresco terraces. St Pancras Chambers. Kings Cross Station offers six Underground lines.

LET'S TALK

020 7727 1717

Lettings@domusnova.com

www.domusnova.com

